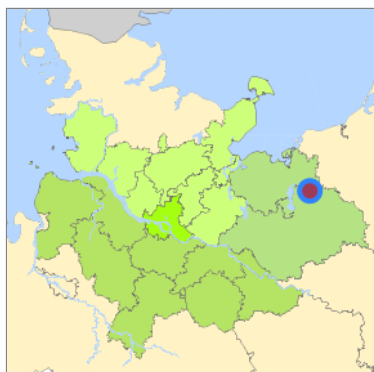
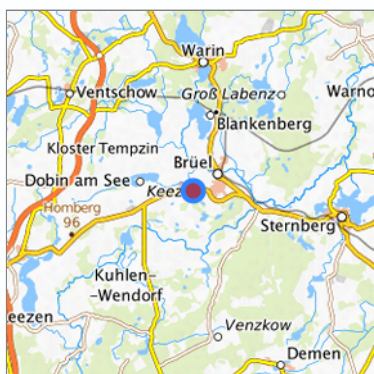


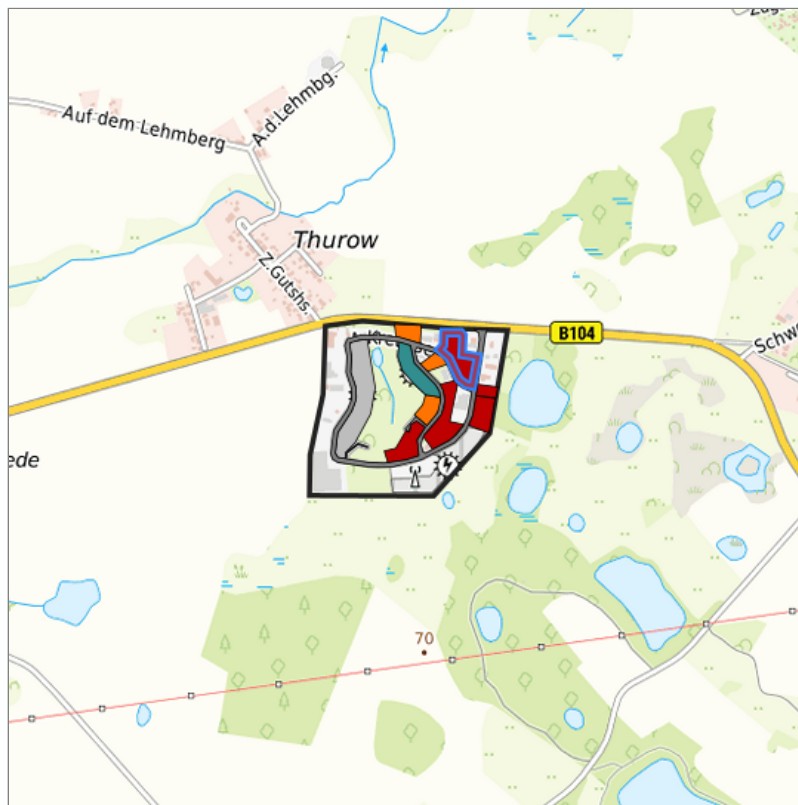
Gewerbegebiet Brüel (008) at Brüel, Landkreis Ludwigslust-Parchim



Location in the Hamburg Metropolitan Region



Location in the requested region



Detailed view of the requested site

Legend

Availabilities

 Immediately	 short term (2 years)	 medium term (2-5 years)
 long-term (> 5 years)	 optional area (bindingly reserved)	 occupational pension plan
 not available		

Brief description

Description of the parcel
Municipality/city

Gewerbegebiet Brüel
Brüel

Parcel

Property size (m ²)	11,568.69
Availability	immediately available
focus use	grassland with trees and shrubs
further use	unavailable

Legal planning situation

Commercial space secured by planning permission	Yes
Building area according to land use plan	commercial building area
Existing planning law	§30 BauGB (qualified development plan)

Type and extent of building and land use

Specific type of structural use	GE
Development situation	fully accessible
24-hour operation	Yes
possible site occupancy ratio	0.6
possible floor area figure	0.6
possible number of full floors	1
possible height of building structures	9
cubic index	No information

Exclusions/restrictions of land use

restrictions to mobilization	Not specified
------------------------------	---------------

Infrastruktur of site

broadband availability (at least 50 MBit/s)	Not specified
quay edge	No
quay edge with sea-going vessel deep water	No
direct rail connection	No
electricity connection	Not specified
gas connection	Not specified
water connection	Not specified
wastewater connection	Not specified

Proprietary situation and marketing intention

proprietary situation	Public
-----------------------	--------

Detailed information about commercial zone

Gross surface area (ha)	31.61
Sector focus	not specified
Type of location of commercial estate	classic commercial estate

Transport accessibility

Availability of public transport	Not specified
----------------------------------	---------------

Information about Brüel

GDP per capita (in €) (district level)	25,438.00
Rate of unemployment (in %) (district level)	5.80
Inhabitants of the municipality	2,554
Trade tax rate	390
Property tax B	525

Contact

Berit Steinberg
Wirtschaftsförderungsgesellschaft Südwestmecklenburg mbH
Geschäftsführerin
Garnisonsstr. 7
19288 Ludwigslust
[+49 3871 722-5600](tel:+4938717225600)
info@invest-swm.de
www.invest-swm.de