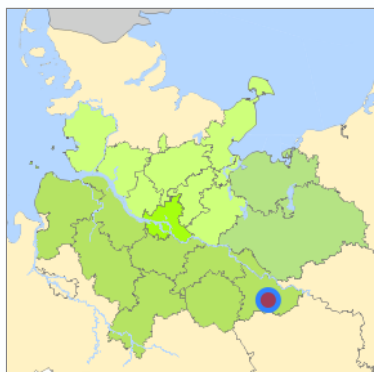
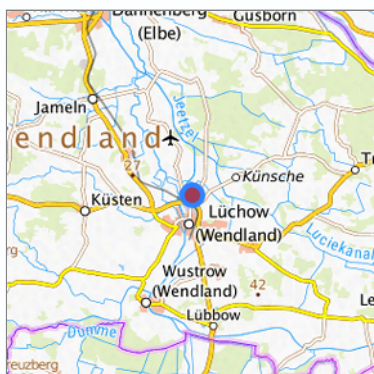


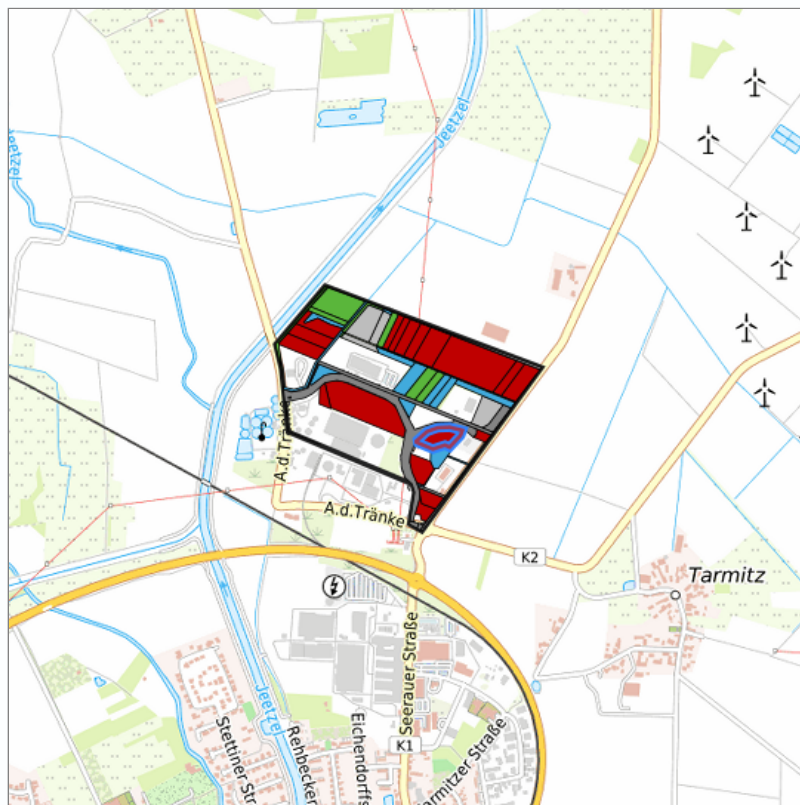
## Lüchow Dickstätte (12) at Lüchow (Wendland), Landkreis Lüchow-Dannenberg



Location in the Hamburg Metropolitan Region



Location in the requested region



Detailed view of the requested site

### Legend

#### Availabilities

	Immediately		short term (2 years)		medium term (2-5 years)
	long-term (> 5 years)		optional area (bindingly reserved)		occupational pension plan
	not available				

### Brief description

Description of the parcel  
Municipality/city

Lüchow Dickstätte  
Lüchow (Wendland)

## Parcel

Property size (m <sup>2</sup> )	9,420.33
Availability	immediately available
focus use	grassland
further use	unavailable

## Legal planning situation

Commercial space secured by planning permission	Yes
Building area according to land use plan	commercial building area
Existing planning law	§30 BauGB (qualified development plan)

## Type and extent of building and land use

Specific type of structural use	GE
Development situation	fully accessible
24-hour operation	Not specified
possible site occupancy ratio	0.6
possible floor area figure	No information
possible number of full floors	No information
possible height of building structures	12
cubic index	No information

## Exclusions/restrictions of land use

restrictions to mobilization	Exclusions of use through development plan and / or Â§34,35 BauGB (for example BImSchG, Seveso-RL)
------------------------------	---

## Infrastruktur of site

broadband availability (at least 50 MBit/s)	Not specified
quay edge	No
quay edge with sea-going vessel deep water	No
direct rail connection	No
electricity connection	Yes
gas connection	Yes
water connection	Yes
wastewater connection	Yes

## Proprietary situation and marketing intention

proprietary situation	Public
-----------------------	--------

## Detailed information about commercial zone

Gross surface area (ha)	48.00
Sector focus	other manufacturing sectors , chemical and pharmaceutical industry , food industry , logistics industry and storage
Type of location of commercial estate	location for emission-intensive industry , classic commercial estate

## Transport accessibility

Motorway	A 14	49.7 km
Motorway	A 24	63.3 km
Motorway	A 39	69.1 km
Motorway	A 7	88.9 km
Motorway	A 25	90.5 km
Motorway	A 1	98.7 km
Main road	B 248	0.7 km
Main road	B 493	2.8 km
International airport	Flughafen Hamburg	121.8 km
International airport	Flughafen Hannover	132.6 km
International airport	Flughafen Rostock	147.1 km
Regional airport	Schwerin-Parchim	81.3 km
Regional airport	Flughafen Lübeck	116.7 km
Commercial airfield	Lüchow-Rehbeck	4.4 km
Commercial airfield	Uelzen	55.0 km
Commercial airfield	Neustadt-Glewe	63.1 km
Commercial airfield	Wismar	121.9 km
Commercial airfield	Hodenhagen	126.9 km
Port	Binnenhafen Uelzen	45.3 km
Port	Binnenhafen Lüneburg	62.7 km
Port	Binnenhafen Lauenburg	71.0 km
Port	Binnenhafen Geesthacht	88.0 km
Port	Binnenhafen Mölln	98.3 km
Rail freight traffic	Ludwigsluster Güterbahnhof	52.7 km
Intermodal terminal	Hafen Lüneburg (trimodal)	62.8 km
Intermodal terminal	Soltau Logistics-Center	92.8 km
Rail passenger transport	Salzwedel	15.6 km
Rail passenger transport	Dannenberg Ost	16.6 km
Rail passenger transport	Hitzacker	22.8 km
Rail passenger transport	Schnega	27.3 km
Rail passenger transport	Leitstade	34.0 km
Availability of public transport	Not specified	

## Links to the commercial zone

<https://wirtschaft-dan.de/gewerbegebiet-dickstaette-in-luechow/>

## Photographs of the commercial zone



## Contact

Jessica Zacharias  
Wirtschaftsförderung Lüchow-Dannenberg  
Salzwedeler Str. 13  
29439 Lüchow (Wendland)  
[05841 9747372](tel:058419747372)  
[info@wirtschaft-dan.de](mailto:info@wirtschaft-dan.de)  
<http://www.wirtschaft-dan.de>