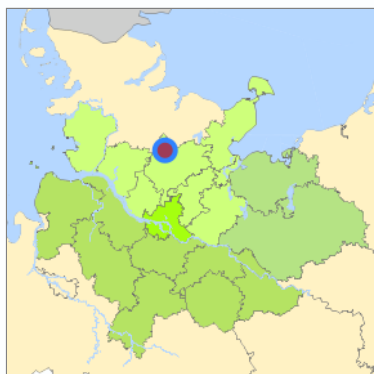


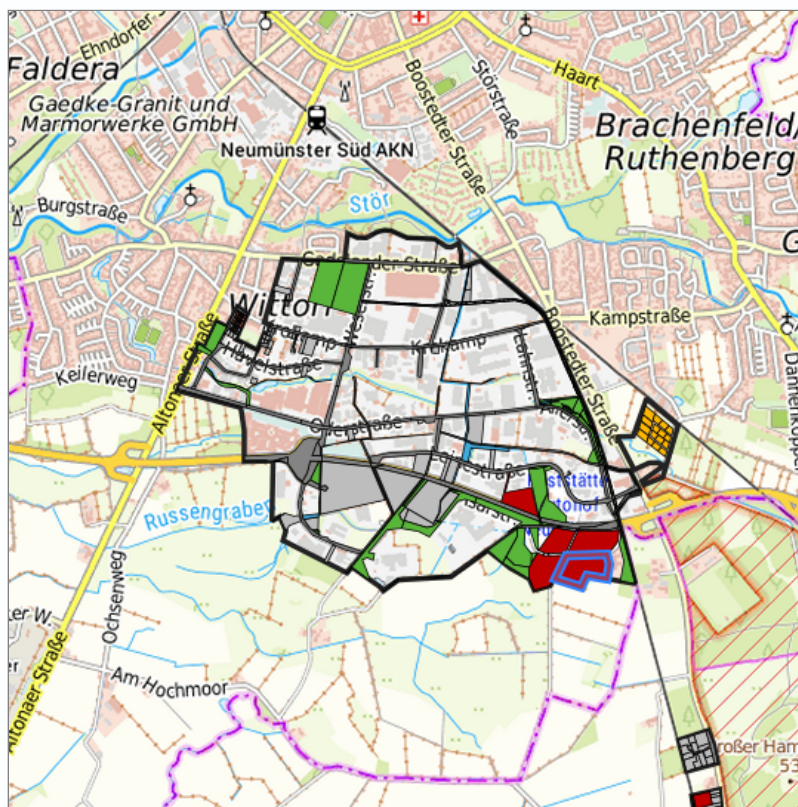
Industriegebiet Süd #14233 (16) at Neumünster, Kreisfreie Stadt Neumünster



Location in the Hamburg Metropolitan Region



Location in the requested region



Detailed view of the requested site

Legend

Availabilities

 Immediately	 short term (2 years)	 medium term (2-5 years)
 long-term (> 5 years)	 optional area (bindingly reserved)	 occupational pension plan
 not available		

Brief description

Description of the parcel
Municipality/city

Industriegebiet Süd #14233
Neumünster

Parcel

Property size (m ²)	42,846.87
Availability	immediately available
focus use	grassland
further use	unavailable

Legal planning situation

Commercial space secured by planning permission	Yes
Building area according to land use plan	commercial building area
Existing planning law	§30 BauGB (qualified development plan)

Type and extent of building and land use

Specific type of structural use	GE
Development situation	fully accessible
24-hour operation	No
possible site occupancy ratio	0.6
possible floor area figure	No information
possible number of full floors	No information
possible height of building structures	12 - 14
cubic index	5

Exclusions/restrictions of land use

restrictions to mobilization	Not specified
------------------------------	---------------

Infrastruktur of site

broadband availability (at least 50 MBit/s)	Not specified
quay edge	No
quay edge with sea-going vessel deep water	No
direct rail connection	No
electricity connection	Not specified
gas connection	Not specified
water connection	Not specified
wastewater connection	Not specified

Proprietary situation and marketing intention

proprietary situation	Public
-----------------------	--------

Detailed information about commercial zone

Gross surface area (ha)	376.2034
Sector focus	other manufacturing sectors , chemical and pharmaceutical industry , manufacture of computer, electronic and optical products , metal production and processing , food industry , logistics industry and storage , machinery and vehicle construction
Type of location of commercial estate	location for emission-intensive industry , classic commercial estate

Transport accessibility

Motorway	A 7	5.3 km
Motorway	A 215	16.7 km
Motorway	A 21	17.8 km
Motorway	A 20	29.1 km
Motorway	A 210	33.8 km
Motorway	A 23	38.9 km
Motorway	A 1	48.2 km
Main road	B 205	1.7 km
Main road	B 430	5.6 km
International airport	Flughafen Hamburg	51.9 km
Regional airport	Flughafen Lübeck	61.6 km
Regional airport	Cuxhaven	114.3 km
Commercial airfield	Hartenholm	20.6 km
Commercial airfield	Hungriger Wolf	37.9 km
Commercial airfield	Uetersen/Heist	58.2 km
Commercial airfield	St. Michaelisdonn	67.7 km
Port	Binnenhafen Itzehoe	42.1 km
Port	Seehafen Rendsburg	43.5 km
Port	Port of Lübeck	55.1 km
Port	Seehafen Gückstadt	58.4 km
Port	Gewerbehafen Neustadt i.H.	63.8 km
Rail freight traffic	Lübeck Nordlandkai (trimodal)	55.8 km
Rail freight traffic	Lübeck Konstinkai	57.1 km
Rail freight traffic	Lehmannkai 1 (HL)	61.0 km
Intermodal terminal	Terminal Neumünster	7.7 km
Intermodal terminal	Cargo-Terminal Lehmann (Lübeck, trimodal)	62.6 km
Intermodal terminal	Süd-West Terminal (FHH, trimodal)	64.8 km
Rail passenger transport	Neumünster Süd	3.7 km
Rail passenger transport	Boostedt AKN	4.8 km
Rail passenger transport	Neumünster	5.8 km
Rail passenger transport	Neumünster Stadtwald	6.9 km
Rail passenger transport	Großenaspe AKN	10.1 km
Public transport	Neumnnster Sonnenhof	0.6 km
Public transport	Neumnnster Harwehgraben	0.6 km
Public transport	Neumnnster Oderstrae 50	0.9 km
Public transport	Neumnnster Allerstrabe	0.9 km

Availability of public transport Available

Information about Neumünster

Inhabitants of the municipality	81,777
Trade tax rate	410
Property tax B	480

Links to the location

<https://www.wa-nms.de/>

<https://www.neumuenster.de/>

Contact

Heino Bubach-Bernhardt
Wirtschaftsagentur Neumünster GmbH
Memellandstraße 2
24537 Neumünster
[04321/6900-104](tel:043216900104)
<http://www.wa-nms.de>